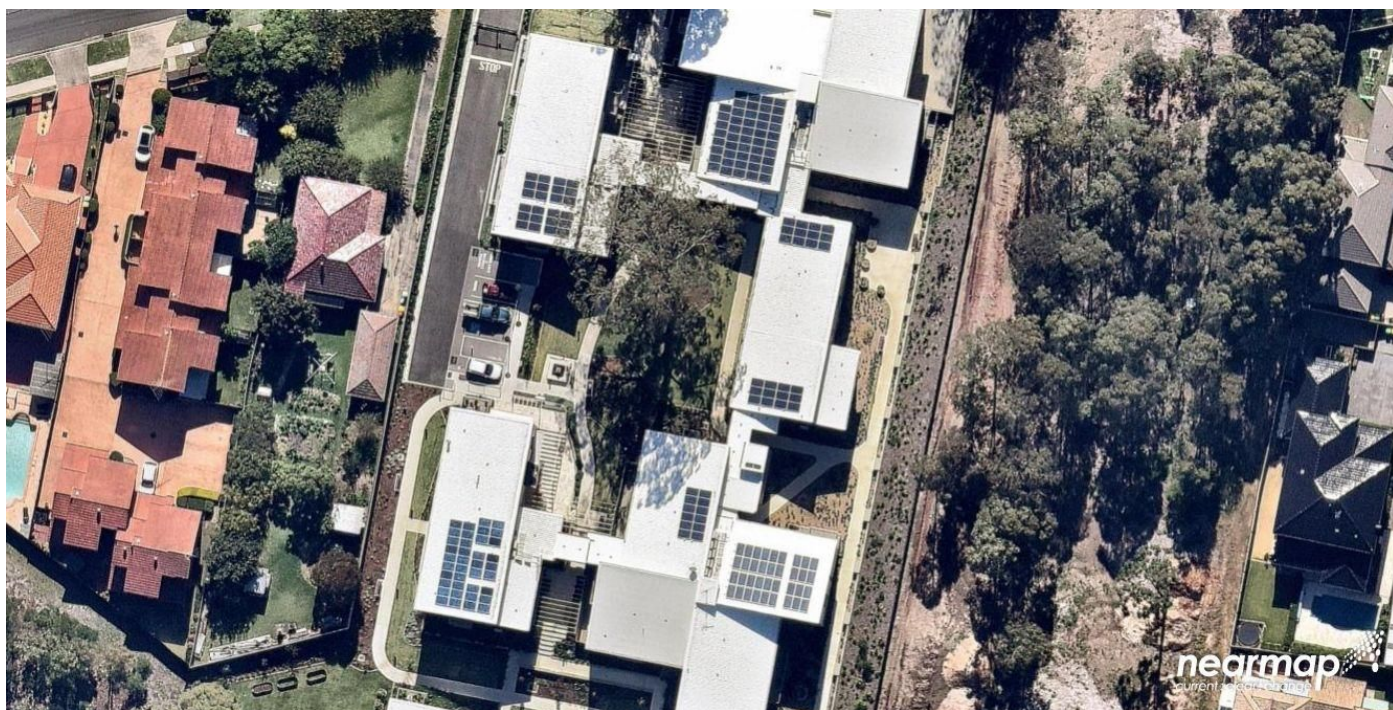


# RK Solar & Consulting Services

## **Case Study – Bankstown Aged Care**





<b>System Size:</b>	<b>67kW (41 X 1.5kW + 1 X 5kW)</b>
<b>Panel Brand:</b>	<b>Suntech Power Holdings Co Ltd</b>
<b>Panel Model</b>	<b>STP250S-20/Wd</b>
<b>Panel Quantity</b>	<b>272</b>
<b>Inverter Brand:</b>	<b>SMA</b>
<b>Inverter Model:</b>	<b>41 X SB1600TL + STP5000TL</b>
<b>Solar Annual Production:</b>	<b>99,280kWh</b>

Bankstown aged care – Donington Gardens based in Sydney – Georges Hall has charming boutique apartments for over 55's. Each apartment has a 1.5kW solar system and community hall has a 5kW solar system. The primary purpose of the complex was to offer sustainable living and reduce energy consumption.

Each system had to be carefully designed and installed based on the unit location, roof space and keeping shading aspects in mind. These systems were installed in 2014; have been problem free and are still performing above expectations.

